

## These are Installation Instructions for Windows Vista

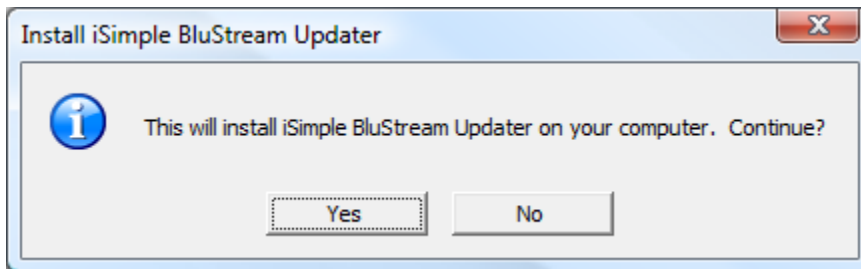
Requirements before you begin:

- 1 - PC or Laptop running Windows XP, Vista or 7 (32 bit ONLY) **\*\*NOT** compatible with any other operating systems
- 2 - Administrative rights on the Windows computer - This is required for installing the USB driver pack and updating software
- 3 – Standard USB to 5-Pin mini USB cable
- 4 - Disable any Pop-up blockers you have enabled on your browser.

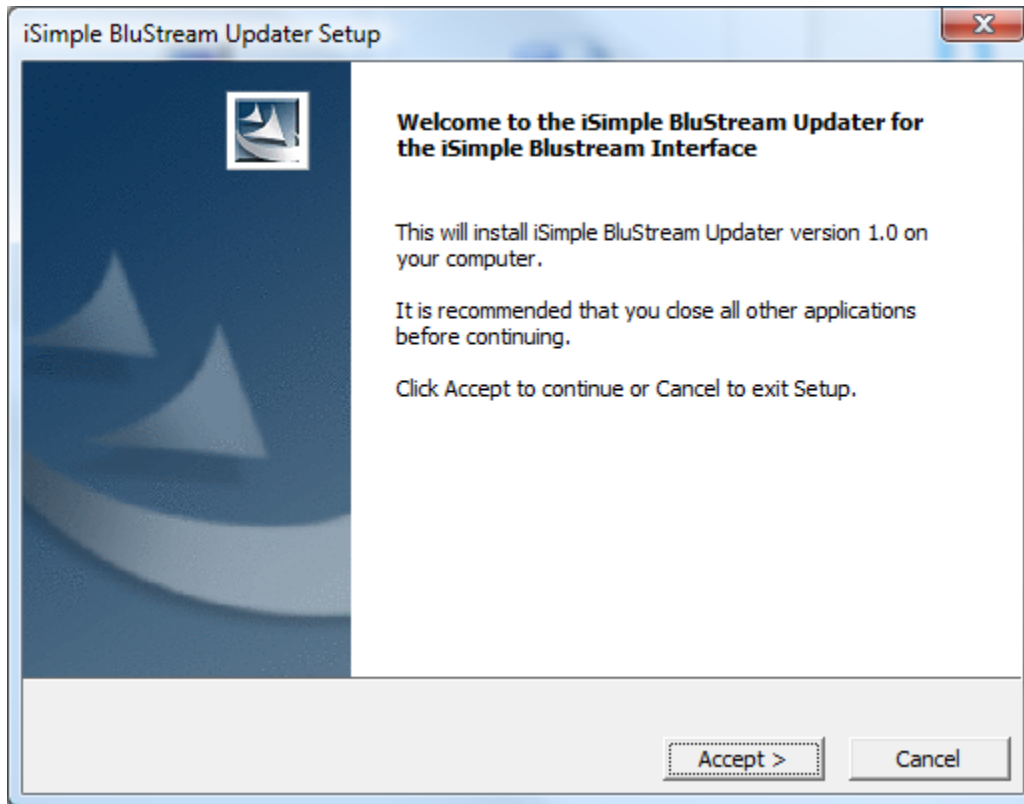
Please be aware that you must have the latest firmware on your PXAMG/uPAC and your PC must have the PXAMG/uPAC updater & drivers installed. If this has not been done please visit <http://www.pac-audio.com/firmware/index.html> and follow the steps listed there before you proceed.

**Note:** After extracting all the files, you may delete the original "ZIP" file, it is no longer needed.

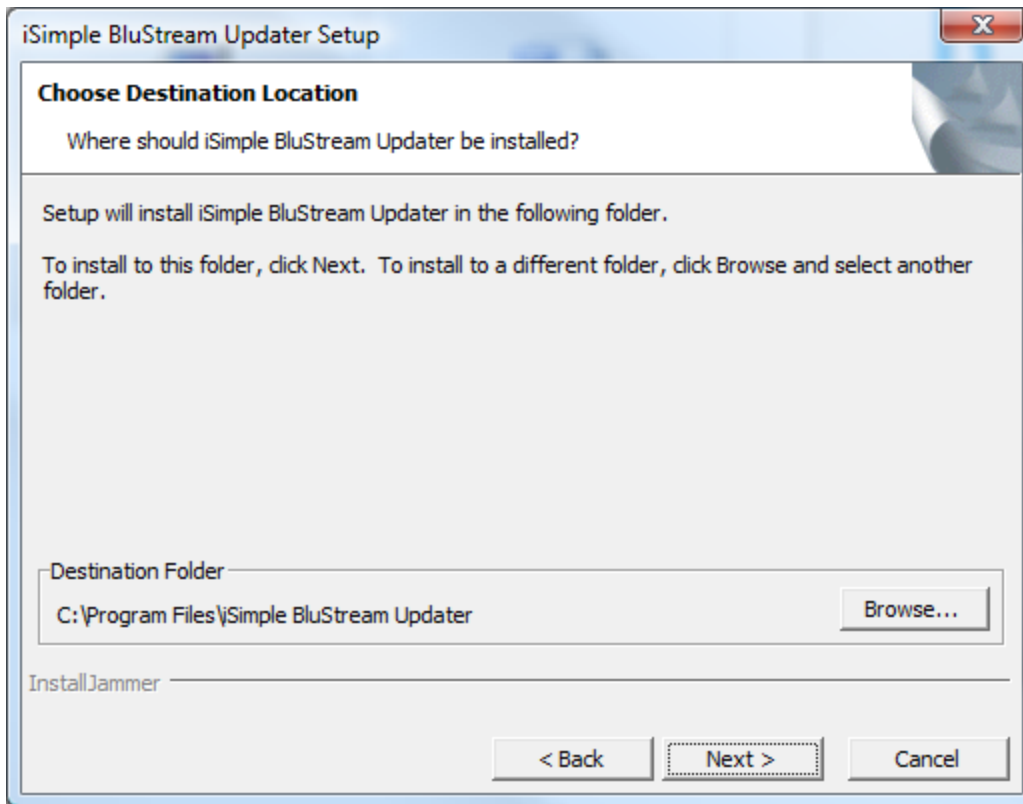
Browse to the iSimple BlueStream Updater program and double click it to begin the installation process. This is the first window that will be displayed. Select “Yes”.



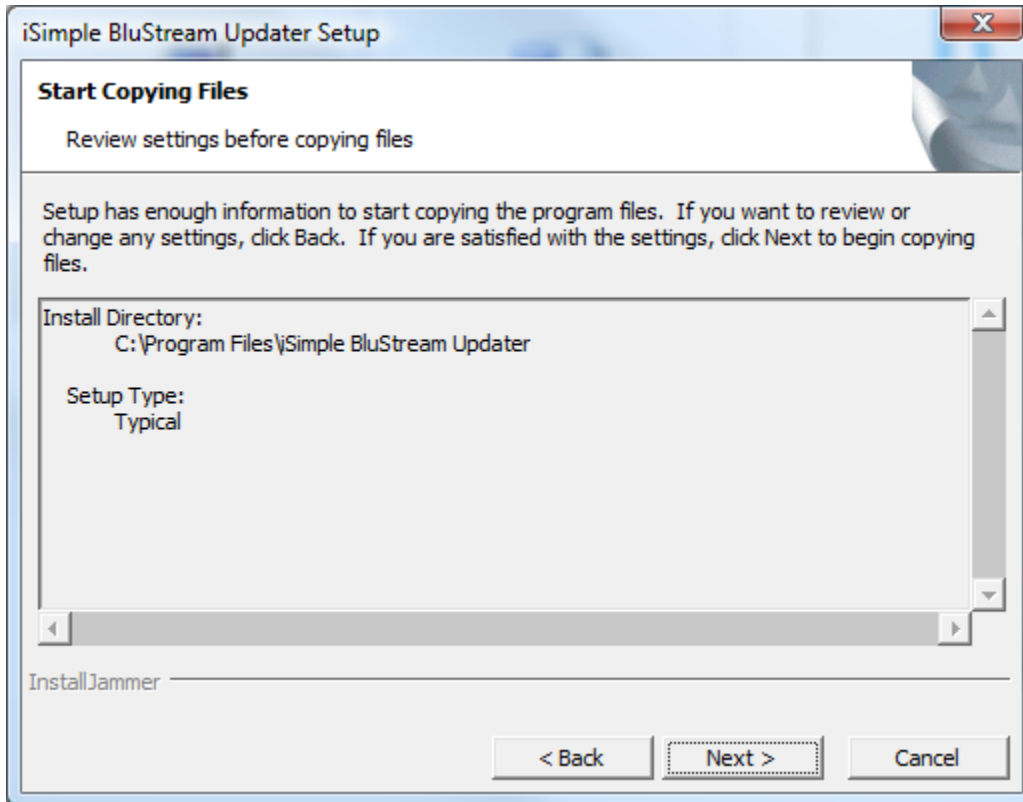
Select “Accept” at the second window.



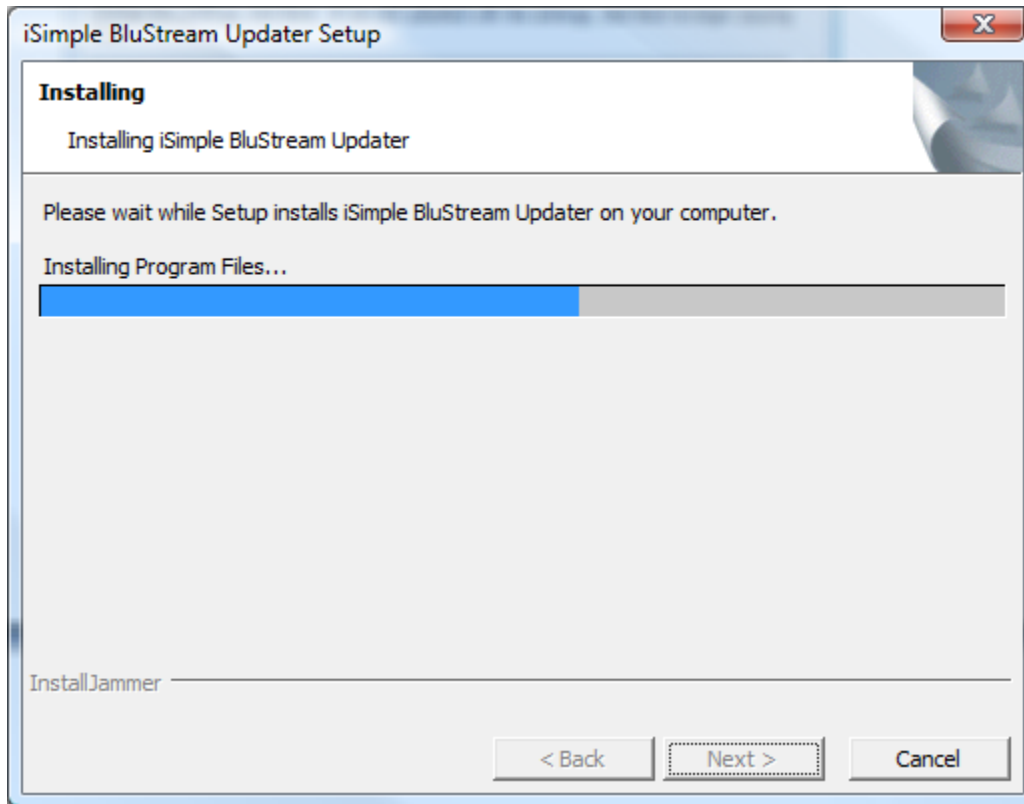
If you would like for the program to be installed in the default location select “Next” at the third window. If you would like to choose the location where the program is installed, browse to the specific location and then select “Next”.



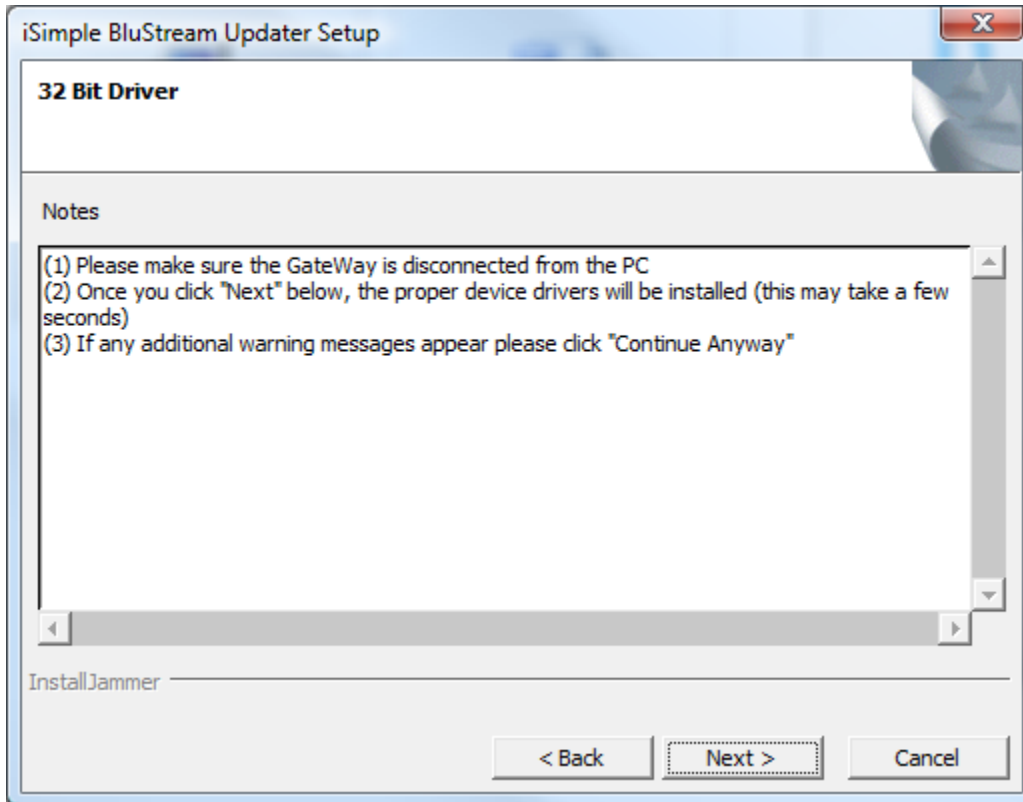
Once the location has been chosen, select “Next” at the fourth window to begin the installation.



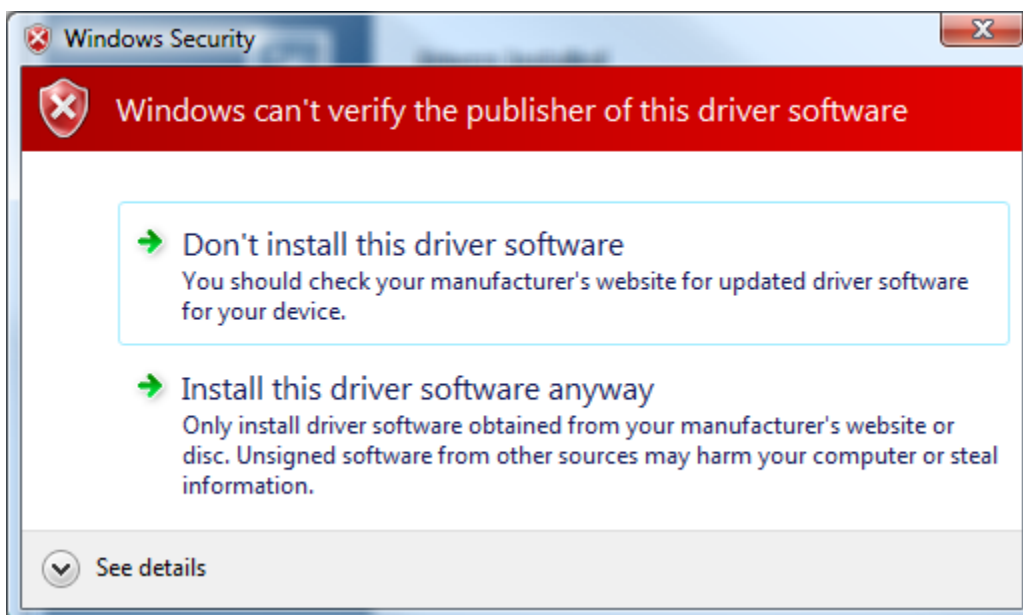
The iSimple BlueStream Updater will now be installed on your PC.



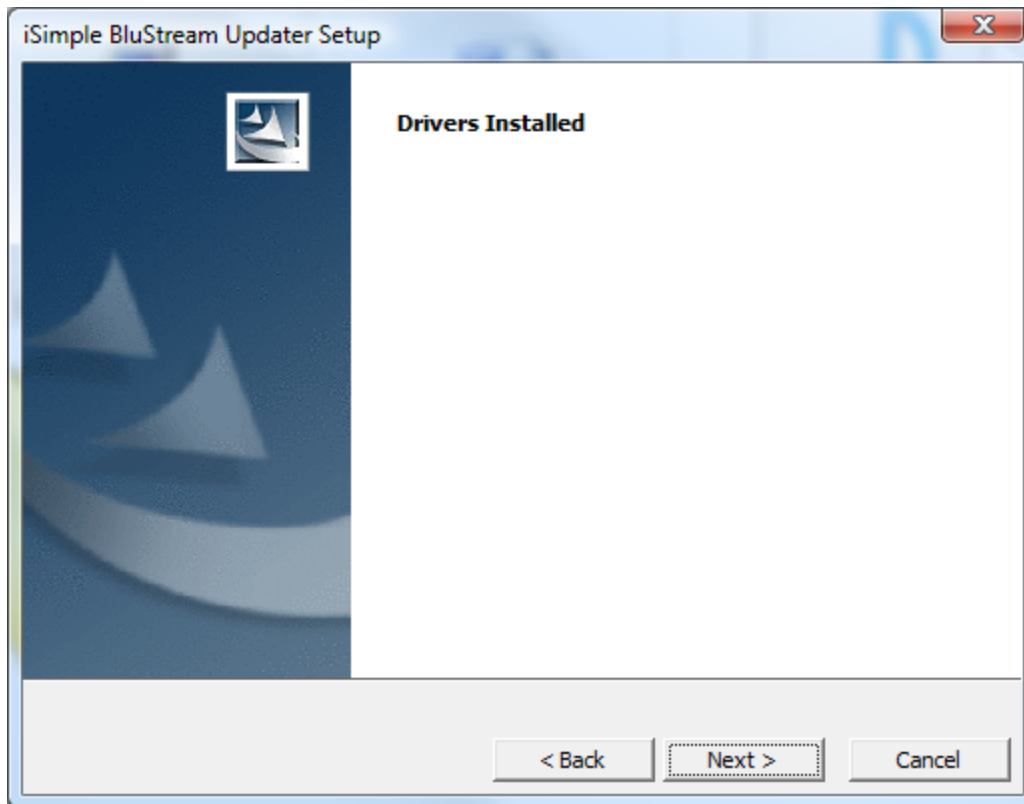
After the BluStream Updater program has been installed, setup will then install the drivers. Follow the instructions given by the updater and then click “Next”.



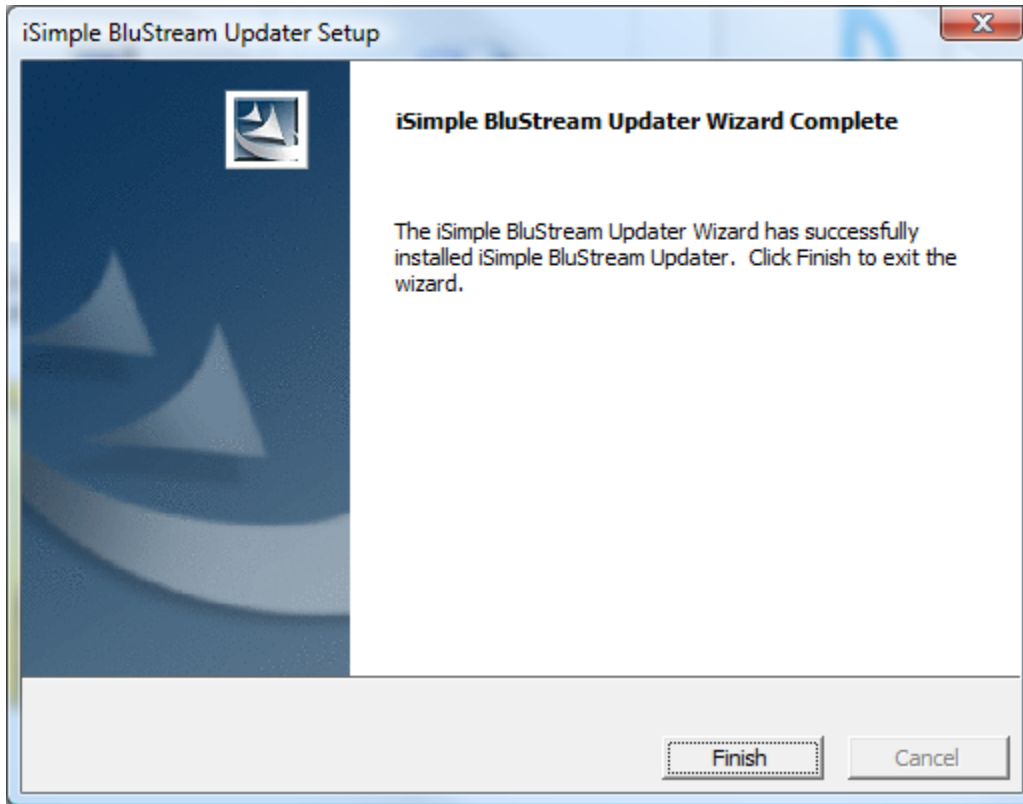
Windows may display a warning message that the driver publisher cannot be verified. Select “Install this driver software anyway”.



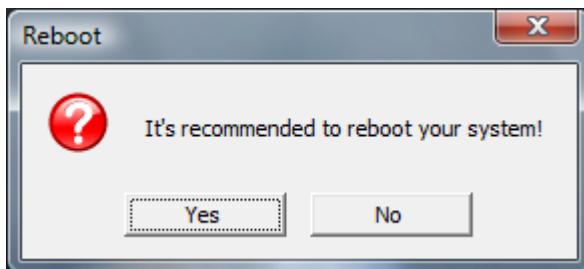
Once the drivers have been installed this window will be displayed. Click “Next”.



The iSimple BluStream Updater is now installed on your PC. Once you see this window, you will be prompted to re-boot your PC.

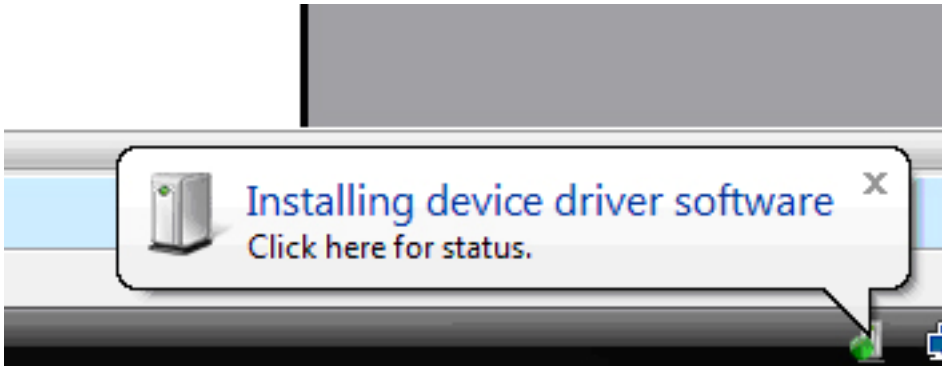


Click "Yes" to re-boot your PC. This ensures that the program will function properly and all drivers will be located. It is highly recommended that you re-boot your PC at this point.

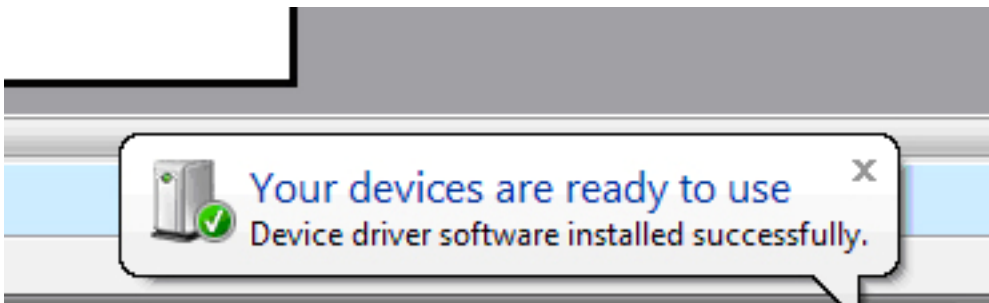




Make sure the iSimple BlueStream is plugged into port 1 on the GateWay and that dipswitch # 2 on the GateWay is in the on or down position (all other dipswitches must be off or up). Connect the GateWay to your PC. You should see this message appear.



When finished, the PC will display that your device has been installed successfully and is ready to use



You can now browse to and select the iSimple BluStream updater program through the Start menu. Follow the instructions on the PDF labeled “Manual” to update your ISBT21 using the newly installed program.

